



SCHEMATIC REVIEW - APPROVED

February 24, 2006


David Dammon
Dammon Engineering
1095 Florida Avenue
Slidell, LA 70458



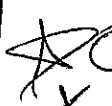

RE: QUIZNOS SUB
"Ellen" Store
807 Canal St.
New Orleans, LA
(Accepted 02-24-06)

Dear David:

I have reviewed the Schematic for the above location, based on The Quiznos Master LLC design criteria, equipment standards, material and general information, and have the following comments and/or concerns:

The schematic plan for the above project is:

APPROVED _____ **as noted** 
(based on compliance with the below comments, concerns, issues)

-
- a. This store will use the materials, methods and general information that is found and detailed in the **Q2002 Architectural and Construction Manual Version One.**
 - b. Note: **ANY CHANGES TO THE SCHEMATIC DRAWING AFTER APPROVAL HAS BEEN GIVEN MUST BE RESUBMITTED FOR REVIEW AND APPROVAL.**
 - c. All schematics must be drawn per Q2002 Dual Order Design.
 -  d. Effective immediately, an HVAC form must be completed and submitted with the construction documents, whether the system is new or existing. Construction documents will not be reviewed until it is received.
 -  e. Quiznos must receive a QVent worksheet, before the construction documents can be reviewed.
 - f. All millwork must meet Quiznos' standard specifications.
 -  g. **Remote compressor noted for the cooler and top mount noted for the freezer, per the schematic. Verify.**
 -  h. **A 9'-6" high freezer is standard. Please complete the Kolpak worksheet and return it to our office. Construction documents will not be reviewed until the Kolpak worksheet has been received by the design and construction department.**
 - i. A 208V toaster is noted and will be ordered unless otherwise specified. Verify.

- j. NOTE: The electric panel is noted as **EXISTING**. If not noted on CD's then a new electric panel will be ordered regardless. The GE worksheet must be submitted with the CD's.
- k. RDC is responsible for confirming the sign survey work has been started. The CD's will not be reviewed until the sign quote has been approved by Quiznos' Design & Construction Department.

REQUIRED CHANGES THAT MUST BE REFLECTED ON CD'S: (IF REQUIRED ITEMS ARE NOT REVISED ON CD'S, THE CD'S WILL BE NOT APPROVED) IF CODE OR SITE LIMITATIONS PROHIBIT CHANGES, DOCUMENTATION IS REQUIRED.

- a. Dual Order design must be shown. Locate the 2nd warmer w/cart adjacent to the baser table and locate the breadrack on the back wall behind the baser table.
- b. Locate the handsink either between the bread rack and the veggie sink, or between the slicer table and stainless steel table. Do NOT locate the handsink between the veggie sink and slicer.
- c. Delete the pilaster in the hallway.
- d. Verify the total build-out square footage.
- e. Verify the finished ceiling height on the 1st floor is the standard 10'.
- f. Reverse the door swing on the walk-in freezer.

This review is performed solely for Quiznos benefit to ensure that the schematic layout meets the requirements of The Quiznos Master LLC and complies with the design and specifications. It shall become incumbent upon you, the Project Architect to insure that the Franchisee have a final architectural plan set that complies with all applicable codes and regulations, as well as mechanical and electrical requirements suited to the restaurant needs.

During the Construction Drawing and Construction Administration phase of the project, keep us informed of any substantial changes and/or problems to the schematic. Copies of any clarifications or addenda's issued, should be sent to The Quiznos Master LLC Design and Construction Department as soon as they are issued.

Should any questions or concerns arise during this project, please contact me at 303454.6713, if I can be of any assistance.

Respectfully,
THE QUIZNOS MASTER LLC

Donna L. Bush
Design & Construction Department

cc: David Lake
Aimee Denham

Enclosed: layout for "Ellen" Store

Approved
as noted
2/24/06
[Signature]

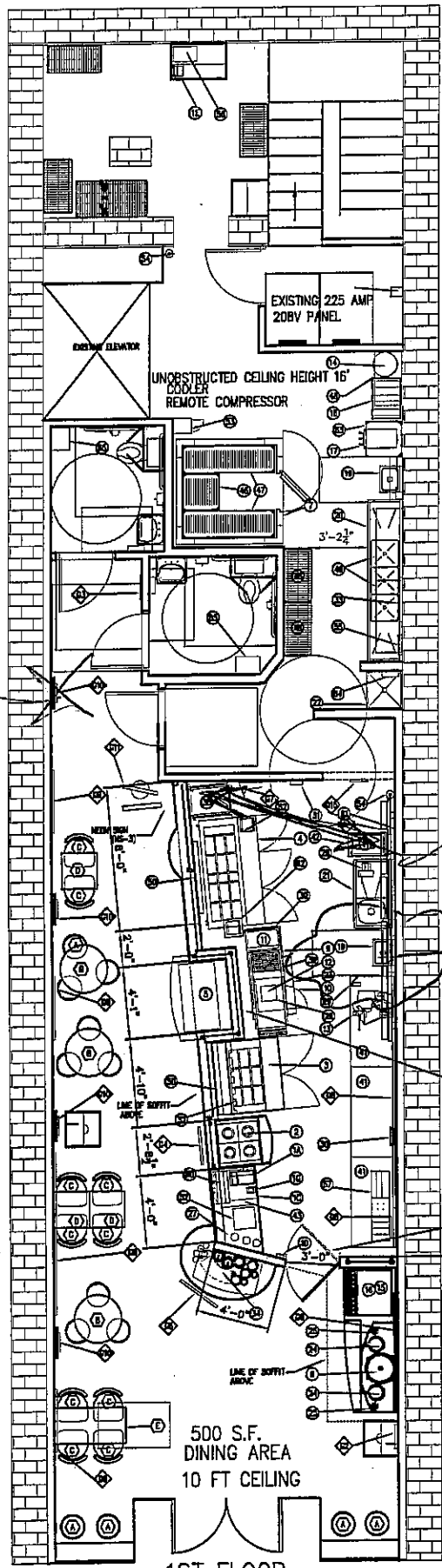
Relocate toaster
in hallway

Show Ind warmer
& cart adjacent to
boiler for dust order

Relocate

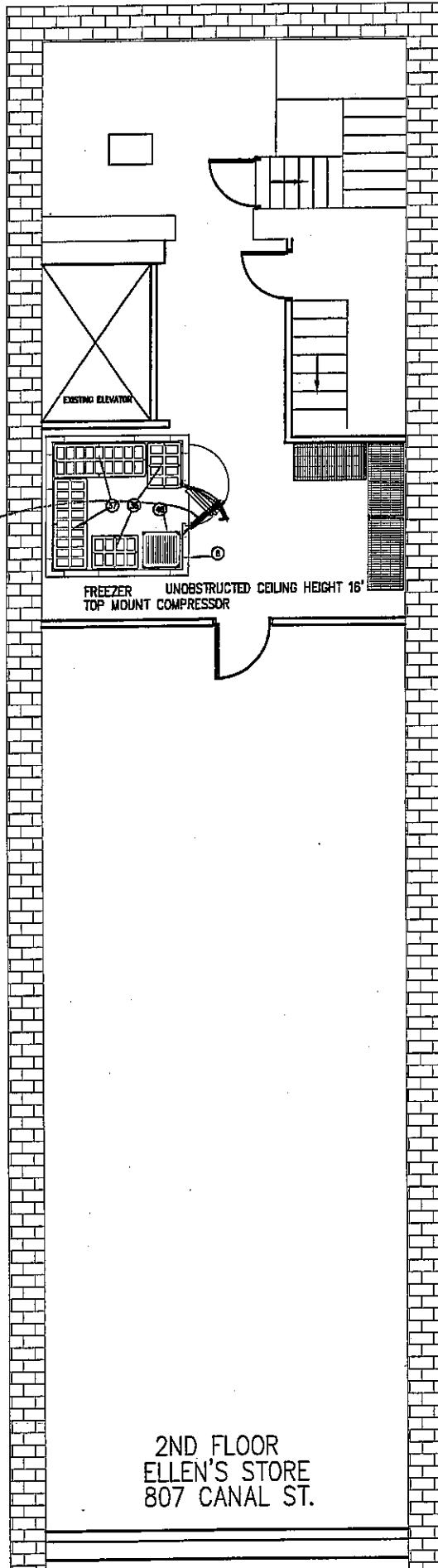
Verify build-out
square footage

Verify 10' finished
ceiling height



1ST FLOOR
ELLEN'S STORE
807 CANAL ST.
2312 TOTAL S.F.

*Reverse door
swing*



*Approved
SS noted
2/24/06
DH*